



CHAN MR GROUP

# 2021 COMPANY PROFILE



ENGLISH VERSION









## MISSION



- ✓ Open communication we encourage open discussion and the best ideas win.
- ✓ Customer focused we put our customers at the center of our focus and our promise to our customers is to provide world class service level and products.
- ✓ Team work we proactively share information, knowledge and ideas, enthusiastically working towards our shared goals and excel together as one team.
- ✓ Diversity and respect the diversity in our teams is an asset and we treat everyone with dignity and respect regardless of status, gender, education, ethnicity and religion.
- ✓ Employees are our assets we believe our greatest asset is our employees and we invest to bring out their potential through continuous training, coaching and mentoring, and also career development planning.
- ✓ Empowerment we empower our people to make decisions within delegated authorities.
- ✓ Meritocracy the rewards and career advancement of our people are based on their performance and capabilities.

## QUALITY POLICY

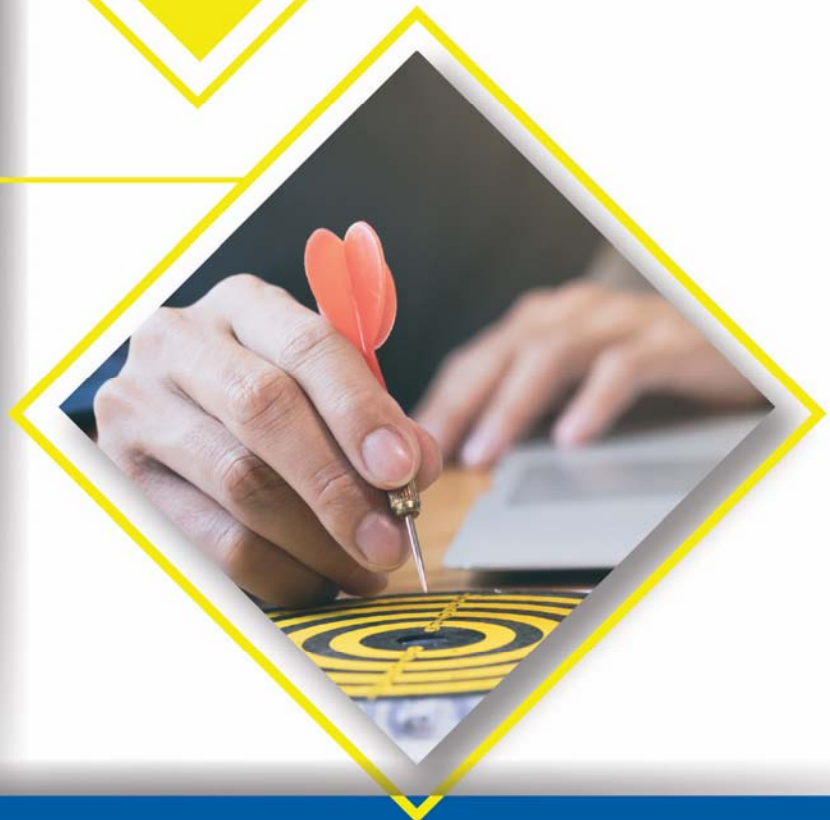
**" Committed to developing construction and products  
With continuous human resource development  
To maximize efficiency and effectiveness "**

## VISION

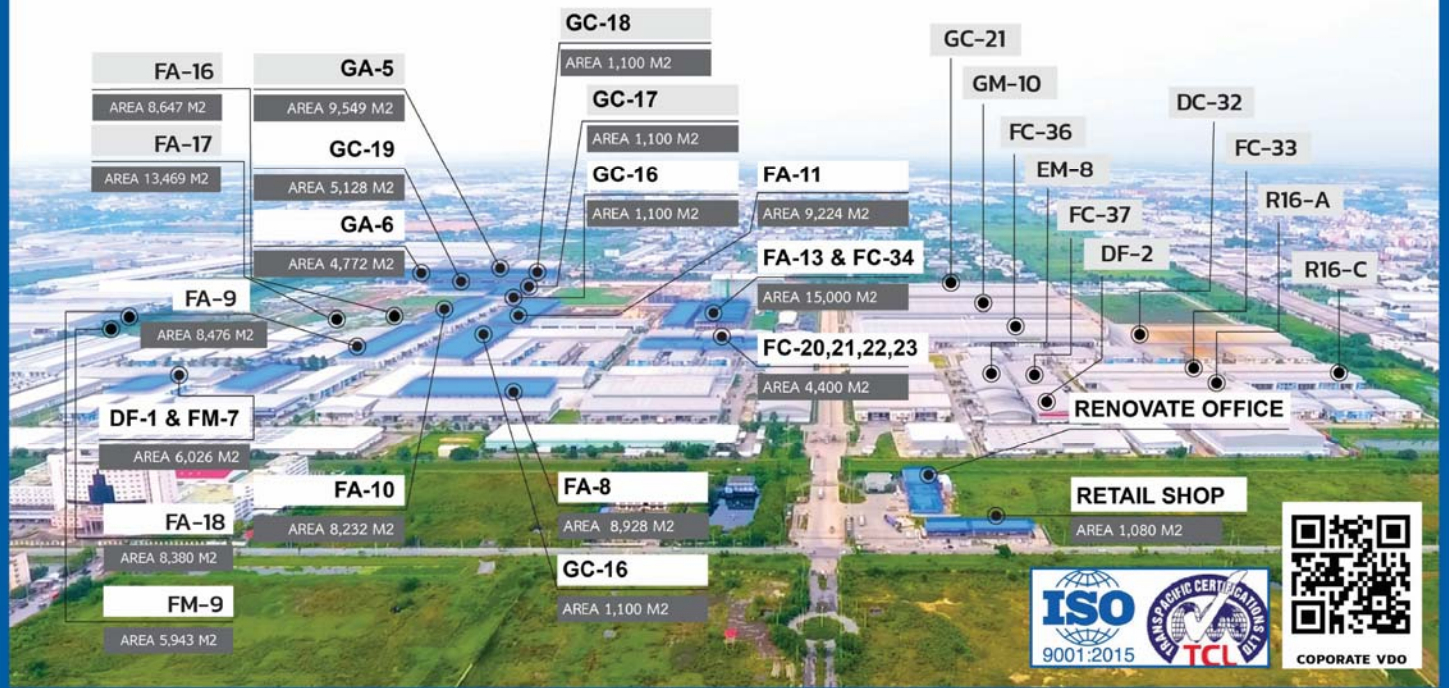
**" Chan Mr Group**

We focus on building trust partners at all levels with quality work, deliver on time and after sales service.

Looking beyond to the future with modern technology, Awareness of the environment and working safely, **"**







## CHAN MR GROUP

Has continuously grow as an organization by expanding the production base and investment in various business opportunity including importing and production of innovative technology to meet the needs of our customers professionally. This has resulted in an efficient customer services and high standard of work and safety which is one of main philosophies of our organization. This philosophy of ours has made Chan MR Group widely recognize by both our domestic and foreign customers for our services.



" We aim to further increase the quality of our services with honesty and sincerity, hoping to be a part in the success of our customers."



We specialize in the design and construction of factories with 30 years of experience in the field, offering rentals of machinery and construction equipment, along with transportation trucks and services in the construction of houses, fences, garages, gas station, underground water tanks and many more.

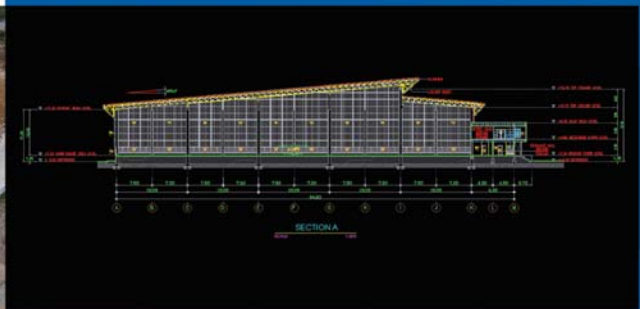


## CHAN MR GROUP

We focus on building trust partners at all levels with quality work, deliver on time and after-sales service. Looking beyond to the future with modern technology, Awareness of the environment and working safely.







## CHAN MR CONSTRUCTION

Service turnkey One Stop Service.

The one-stop service Both designs

And construction The quality standards,  
such as building warehouses. office building  
And utilities team Engineers and architects  
with experience.

## DESIGN

"Modernly design according  
to the needs of our  
customers"

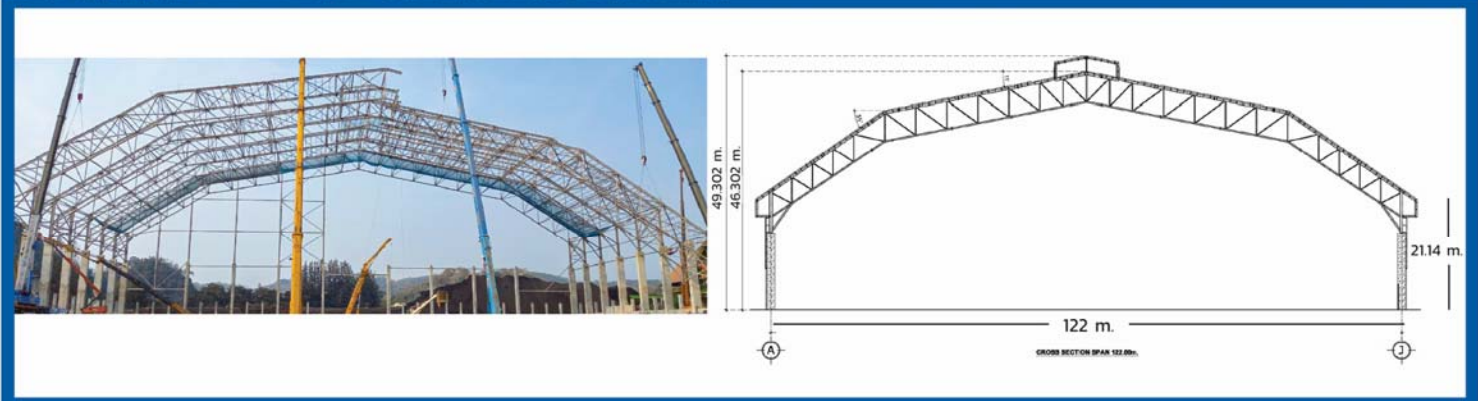
"Designs by team of skilled architects  
to satisfy all types of needs."





**"Quick constuction of Steel framed buildings."** **PEB**

Pre Engineered Buildings are structural buildings with pre-assembled parts from factories, delivered to the site of construction before being set up with a bolt system, increasing indoor spaces and significantly reducing the time needed to complete the construction.



## TRUSS

**"Robust and stylish design by a team of expertise to satisfy the needs of our customers"**

Manufactured with high standard materials and designed by experienced technicians, our truss are durable and can provide support to a wide range of sizes of roofs.







## "International Standards Construction with Professional"

Construction of factories, warehouses and offices with the latest technology to ensure the highest quality.

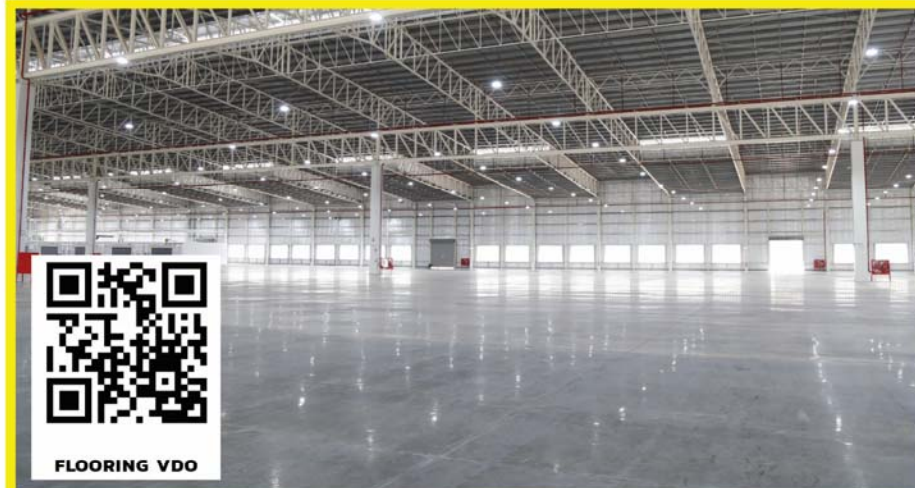
thonburi automotive assembly plant co. ltd



Prospect Phase 5 SUEZ F



Exotic



FLOORING VDO

## FLOORING

"Strong, smooth, with International standards"

Strong concrete slabs able to withstand the weight of large trucks equipped with drainage system made to international standards.

## PRE-CAST

"Installation of pre-made anchor piles and beams made to modern engineering standard"

Done with a construction technology that involves precast concrete, which can be prepared readily within a short period of time, managed by experts.





# PROJECT ON HAND



EMPOWER WAREHOUSE



TPI WAREHOUSE



THAI TAFFETA CLEARING AND FENCE 400 RAI



PROSPECT PHASE 9 FA 18 FM9



KATOEN NATIE EDC11-12



THAI TAFFETA BOILER BUILDING



FANCY WORLD



THAI TAFFETA WAREHOUSE 09









## CHAN MR ENGINEERING

We are a specialist in steel transform, meeting customer requirement professionally.



## BENDING

**"Can be made accordingly to our customers needs"**

Offers bending and molding services to our customers performed by modern technology and supervised by a team with over 30 years of experience.



# CNC PLATE SHEARING AND PRESSING

## CNC PLATE SHEARING AND PRESSING

Cutting Machine  
Controlled by the system  
computer



## MACHINING

**"Bolt production  
ranging from 9 mm.  
to 50 mm. in sizes"**

Provide lathing, drilling, milling,  
twistion and cutting of steel  
services for our customers.







## STEEL STRUCTURE FABRICATION

"We design and construct steel structures of various types as per customer requirements including roof structure, structural steels, billboards and construction equipment."



## STEEL CASING

We produce and sell reinforce bar and beams of various sizes manufactured using machine controlled computers with high accuracy, along with delivery of the bar to the site of construction.

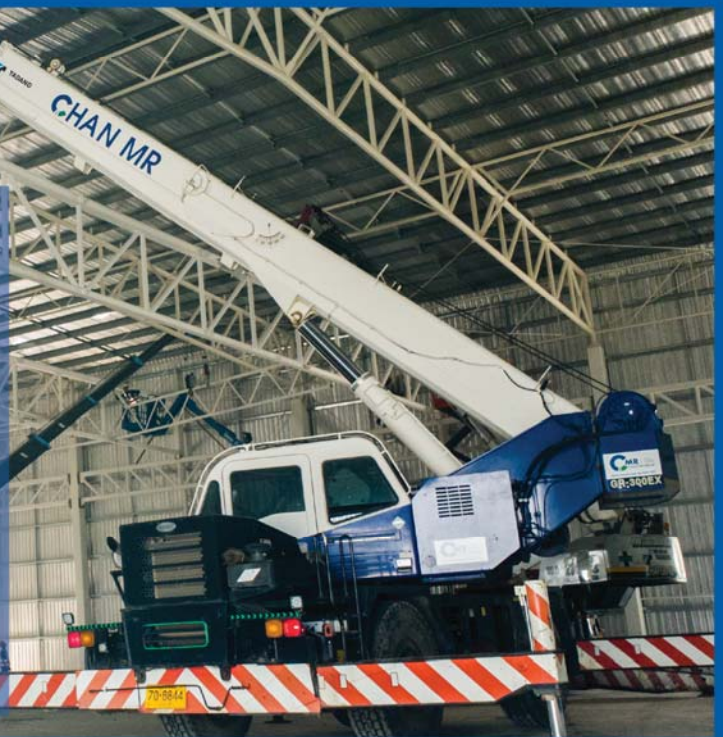






## CHAN MR RENTAL

Co.,Ltd is a subsidiary of Chan MR Group Co.,Ltd which offers rental of machinery, construction tools and transportation trucks along with maintenance services. Nowadays in construction sites, the role of construction tools have been more important than ever due to the high demand of quality from the customers. To meet this demand, the transportation and machinery department of Chan MR Group is well equipped with the latest model of machinery for use with its safety guaranteed and managed by well trained staff that priorities safety working condition.



## > HEAVY MACHINE

Rental services of the latest model machinery with its quality and safety guaranteed.







## รถขนส่ง

12 Wheel loader Crane of 15 Ton



Domestic transport services oversees by talented and punctual teams.

10 Wheel loader Crane of 8 Ton



10 Wheel loader Crane of 6 Ton



## Tool Service

Rentals of construction tools and equipment as an alternative choice for customers to reduce costs for maintenance.

\*For example, construction tools Rent

DCA 110ESI



BS 60-4s

เครื่องสูบลม 14"



TE 30

สว่านไฟฟ้า 3/8 - 13/16"



MT 1100

คีมไฟฟ้า Makita (750 w.)



S 2416

เครื่องตัดไฟเบอร์ 18" (1,430 w.)



MT - 84F

เครื่องสูบลม 85 KG.



SG 1250

เครื่องอัดลม 1,430 w.)



GX- 160

เครื่องอัดลม 32"



## Maintenance

Chan MR Service  
Repair service Used  
construction machines  
Car tool Construction  
equipment



Engine repair



Repair of hydraulic systems.



Spraying



Repair of hydraulic systems.



Electrical Repairs



Construction equipment repair



## WELDING GRANTY

### CHAN MR TRADING

Import constructions machinery  
for factories and innovating  
products that covers various  
utilizations in the industry



## SIASUN



Welding Robot

## DAMA

## Hypertherm®



HDC-2020



DAMA BEVEL +PIPE+TUBE



YHGK-3 PINCHING PIPE ROTATOR



HGK-10  
ADJUSTABLE TURNING ROLLS  
TECHNICAL SPECIFICATION



DAMA BEVEL +PIPE+TUBE



XPR300

เครื่องตัดลวด





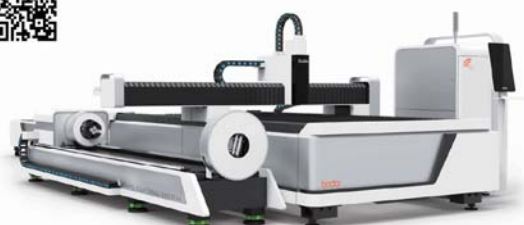
T SERIES

Laser Tube & Pipe



S SERIES

Laser Cutting



E-T SERIES

Laser Plate & Pipe

## เครื่องเชื่อมเต่า

## PROMOTECH®



PRO 35 ADA



PRO 36 R



LIZARD WITH OSCILLATION

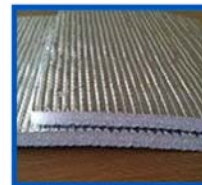


GECKO HS





# TEMPA GUARD THERMAL INSULATION SOLUTION



- ☐ Aluminum Foil and Bubble Insulation
- ☐ Aluminum Foil Foam Insulation



- The superior foil that is specially designed to meet global standards. It meets your needs for an effective and cost efficient protection from the ravages of harsh weather conditions.
- has high reflective properties. Rigorous tests are constantly conducted to ensure its durability & reliability. It is proven for its effectiveness, making it the ideal choice for providing optimum insulations against radiant heat & moisture vapour. Light in weight yet strong and durable.
- is designed for easy handling and offers superior quality at the fraction of the overall building cost.

**ECONOMIC QUALITY RELIABILITY**



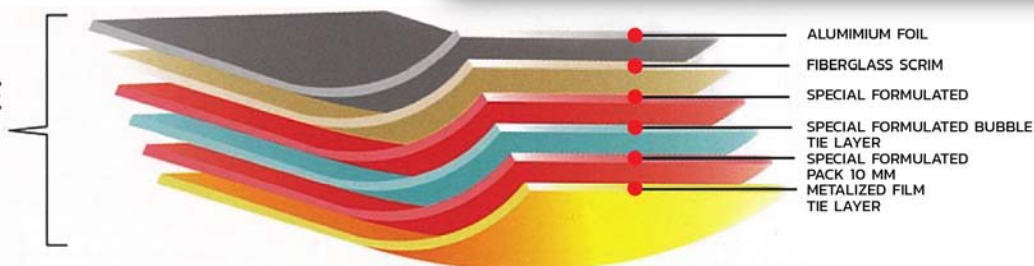
CHARACTERISTIC		TEST METHOD	UNIT (SI)	SPECIFICATION	CLASSIFICATION
Laminated Roll Specifications	Grammage	BS EN 965	g/m <sup>2</sup>	280 ± 100	-
	Tensile Strength	MD CD AS/NZS 1301.448s	kN/m	> 3.0 > 3.0	Heavy
	Edge Tear Resistance	TAPPI T470	N	> 50	
	Vapour Barrier	ASTM E 96	MN.s/g	< 450 > 7	Medium
	Emittance	ASTM C1371	Index	≤ 0.05	Single Sided Reflective
	Thermal Resistance	ISO 8301/MS ISO 8302	m <sup>2</sup> K/W	1.248	-

## BUBBLE FOIL



FIRE RETARDANT TEST FOR S402		
CHARACTERISTIC	TEST METHOD	SPECIFICATION
Fire Propagation of Material	BS 476 ; Part 6	<6
Sub-Index, $i_1$		<12
Overall Performance Index	BS 476 ; Part 7	Class 1
Surface Flame Spread Test		Class 0
Classification of Fire Hazard		

### FR COMPLIANCE COMPOSITE STRUCTURE



**6 layers FR compliance composite structure made up of double sided reflective material (Aluminium & Metalized) bonded to bubble pack by special material.**

- 97% Radiant Heat Reflectivity**  
radiant barrier dramatically improves energy efficiency of a building by effectively reducing up to 97% of radiant heat.
- Moisture Barrier (WVTR)**  
is a good vapour barrier which is specially designed to prevent any penetration of water and moisture-laden air, guarding against condensation, rot and mildew.
- Lightweight**  
is lightweight and strong, thus it makes installation work much efficient.
- UV+ Heat Stability**  
has the ability to maintain its physical size and properties under extreme temperature changes.
- Tear & Puncture Resistance**  
is strong and has high tear resistant feature due to its superior reinforcement.
- Fire Retardant**  
fire rated series tested and complied with international standards such as BS 476 part 6 & 7 . ASTM E84 and AS 1530.
- No Wire Netting**  
being strong and durable is design without additional supporting material for installation.
- Energy Saving**  
radiant barrier is designed to provide good insulation to improve energy performance of the building and save energy.
- SIRIM Certification**  
fire rated series are tested and certified to Sirim Products Listing.

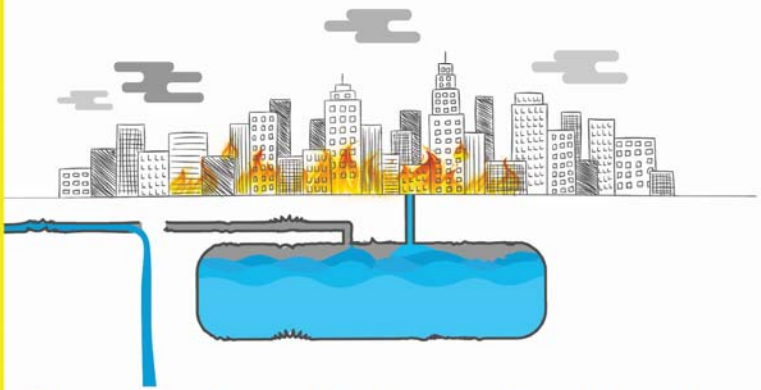


ถังเก็บน้ำใต้ดิน แบบทนต่อการเกิดแผ่นดินไหว

# AQUA TANKS

เก็บรักษาน้ำ เพราะน้ำคือชีวิต

**Aqua tanks** is a tank produced by Chan MR Group by selecting the best technology in water management to find a solution to the various problems about water storage. We expect our daily lives to go on smoothly without the need to worry about the things that have not yet happen. Therefore, no matter what, there will be water flowing with no shortage. Aqua tanks will be the solution to water storage problems and prevent many areas from ever having water shortage during time of need, ever again.



"Clean tap water used in houses is sent through pipelines that may be damaged during natural disasters such as earthquakes, floods, drought and fire or stop supplying water during repairing of the pipelines

This is where water tanks for storage comes in as it can be an important factor in providing us with water for usage"





**AQUA TANKS**  
รับประกันคุณภาพ

**20** ปี



## Highlights Of Aqua Tanks

- ✓ Made with corrosion resistant steel sheet which has gone through mastic epoxy process covering both the inner and outer tank structure, strengthenint the tank surfaces and preventing any leakage.
- ✓ Made with flexible steels making the tanks resistant to earthquake and cracks.
- ✓ Coated with liquid epoxy inside and mastic epoxy outside resulting in a rust resistant tank.
- ✓ Resistant to air pressure due to its cylinder shaped structure.
- ✓ Light weight for ease of transportation and set up.
- ✓ Can be used as a reserve for clean water in emergency cases with the help of a filter system set up within the tanks.

## AQUA TANKS 3 Different Size of to meet the needs of various demands

**Large Tank**  
**100,000 liters**

**AQUA TANKS**  
**ESE100**

For



Can hold water for up to 11,000 people usage of water for 3 days. Suitable for places with high water usage such as hospitals, large building, factories, school and parks.



**Medium Tank**  
**40,000 liters**

**AQUA TANKS**  
**ESE40**

For



Can hold water for up to 4000 people usage of water for 3 days. Suitable for area with moderater water usage such as medium-sized hospitals, communities, schools and buildings.



**Small Tank**  
**5,000 liters**

**AQUA TANKS**  
**ESE5**

For



Suitable for area with moderate water usage such as medium-sized hospitals, communities, schools and buildings.





# WORKER ACCOMMODATION



"Strong and durable prefabricated accommodation with and elegant design, made using high quality materials to match modern engineering standards."



**FENCE**  
**4 RENT.NET**  
คิดถึงรั้ว...คิดถึงเรา



[www.fence4rent.net](http://www.fence4rent.net)

## METAL SHEET FENCE

Perfabricated fences set up on a variety of surfaces such as ground, concrete or cement, by professionals using international standard materials.



FENCE VIDEO





VDO C PARK

## Garage : simple setup



**Light Weight**



**Durable**



**Easy Installation**



**Low Budget**



**Modern**



**Flexibility**

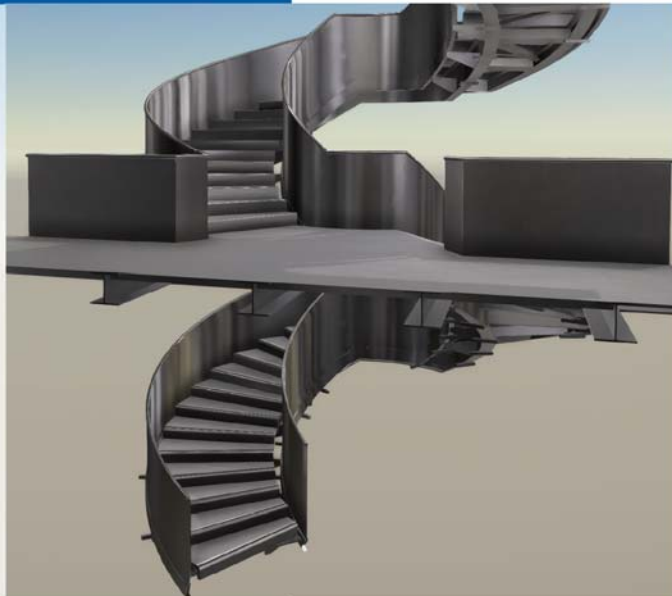




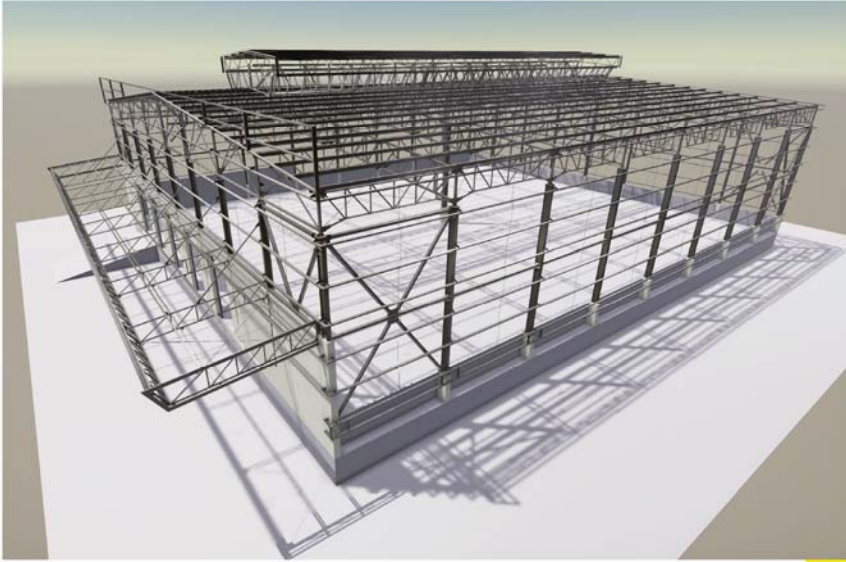


## CHAN MR DETAILING

Offer advices regarding Detailing 3D Model, Shop Drawing, As Built Drawing, BOQ List and also provide advices in managing projects involving steel construction, concrete reinforce steel structures and other system using BIM technology.





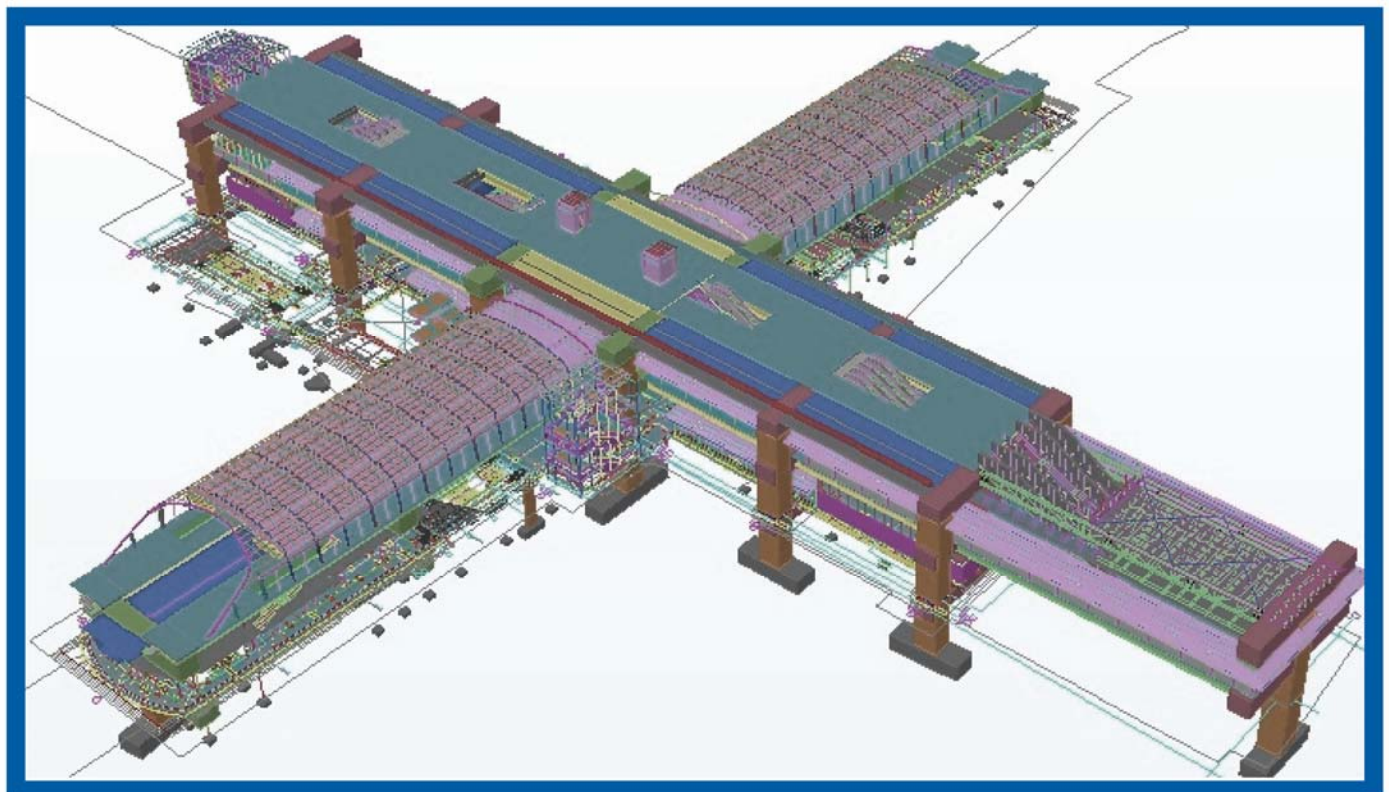
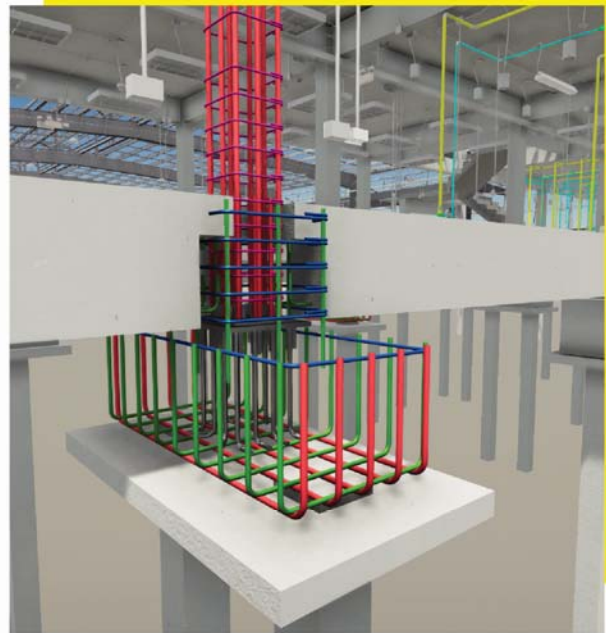


## BIM for Construction

BIM for construction management system is a system which combines every aspect of the work together such as architecture, structure, design and other related works in order to make planning for the project easier and more efficient thus increasing profits.

### Infrastructure Work Detailing

- Services for the design and planning of basic utilities such as construction of electric trains, double rail train and others
- Provide a Shop Drawing services and find the amount of work (BOQ), concrete work and reinforce steel Bar Bending Schedule
- Provide services in making BIM of all aspects including the architecture structure and system







Construction  
**080-970-4396**  
Jarat



Bending  
**090-090-7303**  
**092-224-6889**  
Sarayoot, Preecha



Transport/Rental For rent  
**088-002-6707**  
**086-977-6825**  
Boonpeng, Kiatisak



teel Casing  
**085-918-0685**  
**092-223-1356**  
Vimonpan, Saowanee



**087-673-3456**  
**090-090-7302**  
Kitkajorn, Narongrit



Maintenance  
**080-970-4253**  
Kritsana



Worker Prefab House  
Fence  
**085-918-0639**  
Payow



Import Machinery Factory  
**081-857-3648**  
Philip Ang









Youtube



Facebook



[www.chanmr.com](http://www.chanmr.com)

## CHAN MR GROUP CO.,LTD.

119/2 Moo1 Bangkruai-Sainoi Rd., Bangrakpatana Bangbuathong Nonthaburi 11110

Tel. +662 034-7777 Fax. +662 032-3939 E-Mail: [info@chanmr.com](mailto:info@chanmr.com) [www.chanmr.com](http://www.chanmr.com)

